



## “Caring for our Caregivers”

Saturday, Feb 11<sup>th</sup>, 2012 (8:30 – 4:45)

Redeemer Lutheran Church (229 Cowperthwaite Place; Westfield, NJ 07090)



### Key Note Speakers & Presentations:



#### “Holding Up the Prophet's Hands”

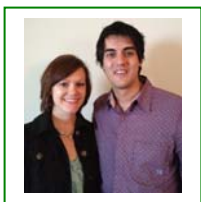
Rev. Dr. Bruce Hartung  
Dean of Ministerial Formation  
Concordia Seminary, St Louis, MO

- I. Why Intentional Support Is Important**
- II. Organizing Your Church**
- III. Strategies & Tactics**

**70% of Ministers are disconnected  
from their churches**

+ Our clergy can not care for  
themselves

+ Bring **a team** & be equipped to lift  
up your Prophet's hands!



#### “The Needs of a Pastor's Wife” with *Kristi Bearss*

- I. Balancing Family & Ministry; Is It Possible?**
- II. How Does A Pastor's Wife, Live In The Joy Of The LORD?**
- III. Partners In Ministry; What Is The Role Of A Pastor's Wife?**

#### “Why Hold Up Your Hands?” with *Pr. Greg Bearss, LakePointe Church (LCMS)*

- (I) Ministry to the Least of These; (II) Pastoral Self Care; (III) Caring for Your Key Leaders**

### Schedule For Today

- 8:30 Registration & Fellowship
- 9:00 Greetings from Pr. Paul Kritsch and Devotion with President Bill Klettke
- 9:30 **I. Key Note Addresses** (Dr. Hartung in the Sanctuary; Pr. Bearss in Parish Hall; Kristi Bearss in Teacherage)
- 10:30 Break
- 10:45 **Breakout Sessions to choose from (see below)**
- 11:45 Lunch in Luther Hall
- 12:30 **II. Key Note Addresses** (see room assignments in Session #1)
- 1:30 Break
- 1:45 **Breakout Sessions to choose from (see below)**
- 2:45 Break
- 3:00 **III. Key Note Addresses** (see room assignments in Session #1)
- 4:00 Break
- 4:15 Closing Consecration
- 4:45 Head to the Vineyard

**FREE  
CHILDCARE**

*Let Elaine know when  
you call to register*

**Register? Contact Elaine at NJ District Office: 908.233.8111 / [schleifere@njdistrict.org](mailto:schleifere@njdistrict.org) R.S.V.P. NOW!!**

\$25 per person / \$75 for unlimited group (covers: registration, materials, snacks & beverages)

(A catered lunch is available for \$10)

### **Breakout Sessions to Choose From**

*Caitlin Dinger- Social Media & The Great Commission*

*Pr Andy & Gretchen Nelson: “Nick at the Net”- they raised \$40,000 in one event for a non church member*

*Bill Schmidt- Planting our newest House Church in NJ at Naval Weapons Station Earle; Operation Barnabas & military ministry*

*Pr. Paul Huneke- Pastoral Supervision & Congregational oversight of a House Church Planter*

*Pr. Steve Vogt- My personal story of loosing 90 lbs*

*Rev Dr Tony Steinbronn- Holding Up the Prophet's Hands in a Post-Christendom Culture*

*Bruce Sutherland- Lutheran Hour Ministries helping you to make Jesus' last command, your first concern*

*Pr. John Reynolds- Doxology and other resources to help in Caring for our Caregivers*

*Pr. Haron Orutwa- Mission opportunities among Kenyan immigrants here in New Jersey*

*Pr. Jim Buckman- House Church Planter Certification intro*

*Patty Criscenzo (RN)- Medical Ministry through the local congregation*